



# *Polar Bear Range State Circumpolar Action Plan*

*2023 – 2025 Implementation Plan*

## *Periodic Progress Report*

### **Objective: 3**

Ensure the conservation of essential habitat for polar bears

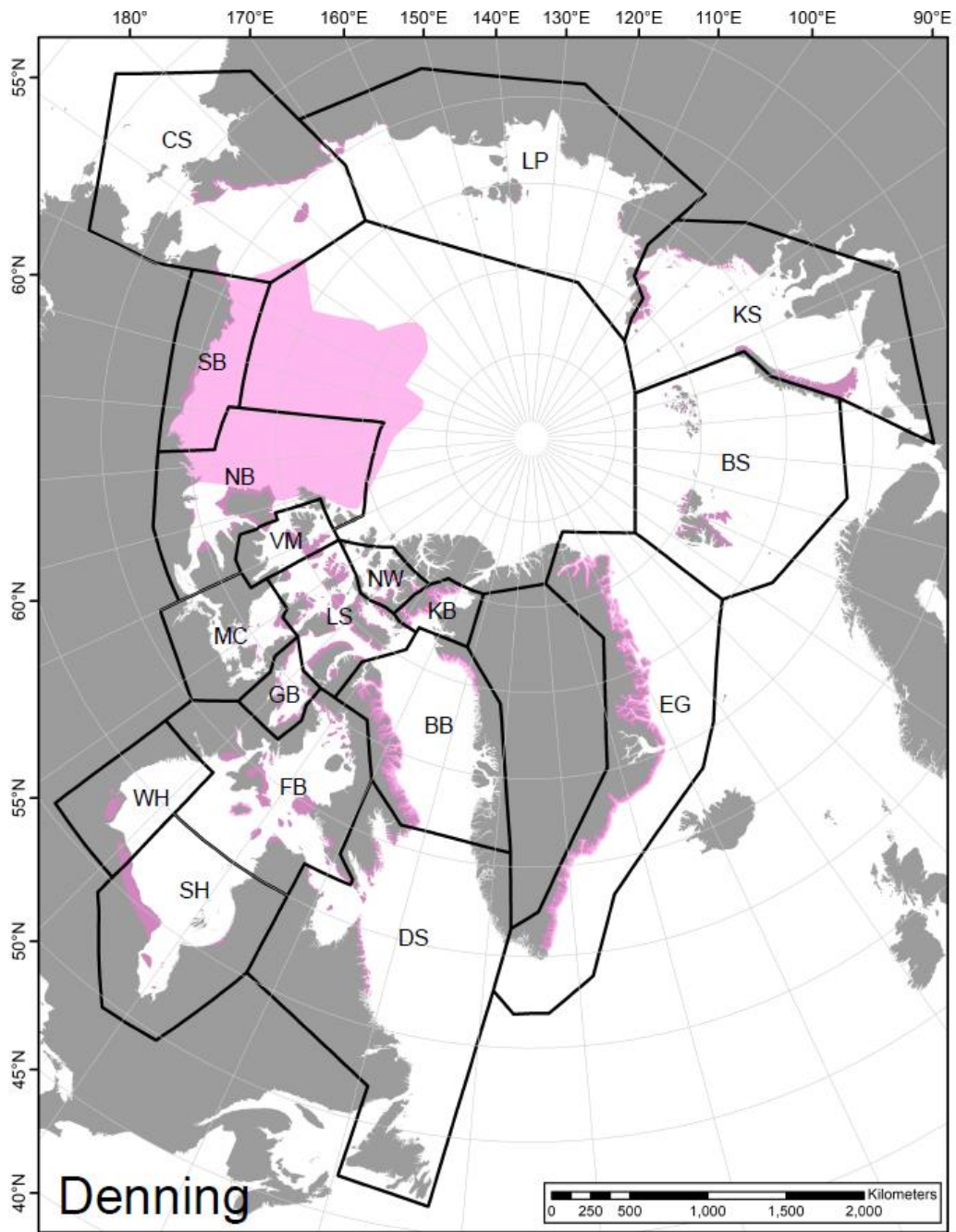
**Objective Lead(s):** Lauren Schmuck (Canada) and TBD (Greenland)

**Reporting period(s):** October 2023 – July 2024 (periods 1-3)

## *List of Objective 3 Actions:*

***Action EH-A2: Define levels of protective status of polar bear essential (or commonly used) habitat (i.e., winter, summer and denning habitat).***

**Action EH-A2**  
*Define levels of protective status of polar bear essential (or commonly used) habitat (i.e., winter, summer and denning habitat)*



# Action EH-A2

## Deliverables and milestones

**Deliverable 1:** *For each of the 19 polar bear subpopulations, a map has been created that shows the location of protected areas and the essential/commonly used polar bear winter, summer and denning habitats that were identified by the PBSG during the CAP 2020-23 Implementation Period.*

**Deliverable 2:** *A report outlining the methods used to produce the maps.*

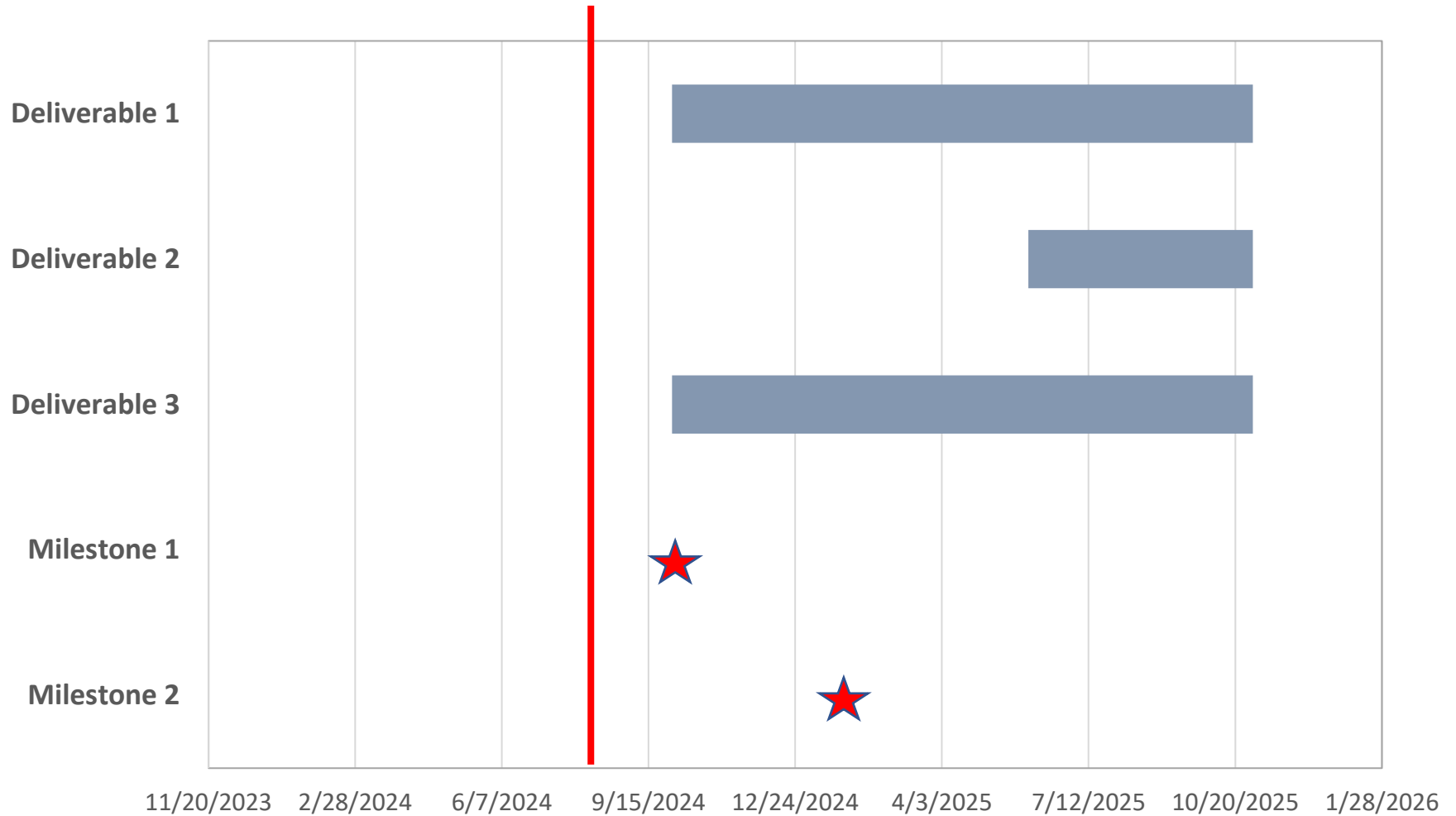
**Deliverable 3:** *Inclusion of Indigenous knowledge in map production.*

**Milestone 1:** *The definition of a protected area has been determined.*

**Milestone 2:** *Layers of protected areas have been acquired for as many subpopulations as possible.*

# Action EH-A2

## Planned timeline



# Action EH-A2

## Workplan

Periods	Executive summary of planned work in each two-period slot
1-2 Nov. 2023 - Apr. 2024	The PBRs and the PBSG exchanged correspondence pertaining to the scope of the work required, and the PBSG noted four conditions. A representative of Inuit Circumpolar Council (ICC) has agreed to participate on the Objective 3 Working Group.
3-4 May 2024 - Oct 2024	A decision will be made regarding the best mechanism by which to undertake the work. Consensus will be reached on the definition of protected area.
5-6 Nov. 2024 - Apr. 2025	The addition of protected areas onto the maps of commonly used habitats has begun. Indigenous knowledge will be used during the production of the maps. Layers of protected areas have been acquired for as many subpopulations as possible. A report outlining the methods used to produce the maps is in progress.
7-8 May 2025 - Oct 2025	Protected areas have been added to the maps of commonly used habitats. A report outlining the methods used to produce the maps has been finalized. The report and maps have been shared with (and presented to) the HoDs prior to the Meeting of the Parties.

## *Action EH-A2*

### *Progress in Periods 1-3*

<b>Deliverable/Milestone:</b>	<b>Progress during reporting period:</b>	<b>Deviation from planned timeline</b>	<b>Expected progress in upcoming period(s)</b>
<p><b>D1:</b> For each of the 19 polar bear subpopulations, a map showing the location of protected areas and the essential/commonly used polar bear winter, summer and denning habitats that were identified by the PBSG during the CAP 2020-23 Implementation Period.</p>	<p>The PBRS and the PBSG exchanged correspondence pertaining to the scope of the work required, and the PBSG noted four conditions.</p>		<p>A decision will be made regarding the best mechanism by which to undertake the work. Consensus will be reached on the definition of protected area. Once finalized, the maps will be shared with (and presented to) the HoDs.</p>
<p><b>D2:</b> A report outlining the methods used to produce the maps.</p>	<p>The PBRS and the PBSG exchanged correspondence pertaining to the scope of the work required, and the PBSG noted four conditions.</p>		<p>A report outlining the methods used to produce the maps will be produced and shared with (and presented to) the HoDs.</p>
<p><b>D3:</b> Inclusion of Indigenous knowledge (TBD)</p>	<p>A representative of Inuit Circumpolar Council (ICC) has agreed to participate on the Objective 3 Working Group.</p>		<p>Indigenous knowledge will be used during the production of the maps.</p>

# Action EH-A2

## Progress in Periods 1-3

Milestone:	Progress during reporting period:	Deviation from planned timeline	Expected progress in upcoming period(s)
<p><b>M1:</b> The definition of a protected area has been defined.</p>	<p>Correspondence exchanged between the PBRs and the PBSG. The PBSG noted the importance of defining protected areas, prior to the start of the mapping work.</p>		<p>Consensus will be reached on the definition of protected area.</p>
<p><b>M2:</b> Layers of protected areas have been acquired for as many subpopulations as possible.</p>	<p>The PBRs and the PBSG exchanged correspondence pertaining to the scope of the work required.</p>		<p>Layers of protected areas from each Range State, and for as many subpopulations as possible, will be acquired and added to the maps of essential/commonly used habitat.</p>



## *Action EH-A2*

### *Support Request*

- *It was noted that financial support in the form of a contract will be needed in order for the PBSG to undertake this work.*